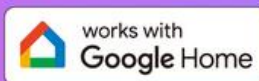


OREiN



User Guide

OREiN Matter Wi-Fi Smart Light Bulbs



Content

About This Guide	3
Introduction	4
Appearance	6
Set Up Your Device via Matter	7
1. Add to Alexa via Matter	8
2. Add to Google Home via Matter	15
3. Add to Apple Home via Matter	22
4. Add to SmartThings via Matter	27
5.Add to AiDot APP(compatible with Alexa,Apple home &SmartThings).....	32
Frequently Asked Question	33

About This Guide

This guide provides a brief introduction to the Wi-Fi smart light bulbs, Matter and regulatory information.

Please note that features available in **OREiN** may vary by model and software version. **OREiN** availability may also vary by region.

All images, steps, and descriptions in this guide are only examples and may not reflect your actual **OREiN** experience.

More Info

- Specifications can be found on the product page at <https://iOREiN.com/matter>
- Our Technical Support can be found at <https://iOREiN.com/contact-us>
- Feel free to request extra 6- months warranty below:



Introduction

First, please let me introduce you to the point of the smart light bulbs with Matter protocol:

Seamless Interoperability: By supporting the Matter protocol (formerly known as Project CHIP), the intelligent lightbulb ensures seamless interoperability with various smart home devices and platforms. It can effortlessly communicate and collaborate with other Matter-enabled devices, making it a valuable addition to any smart home ecosystem.

Universal Compatibility & Enhanced User Experience: With Matter, the intelligent lightbulb becomes compatible with a wide range of smart home ecosystems and platforms, such as Apple's HomeKit, Google Home, Samsung, and Amazon's Alexa. This ensures users have more choices and flexibility when integrating the bulb into their existing smart home setup, and the intelligent lightbulb offers a consistent and user-friendly experience across different devices and platforms.

Enhanced Security: Matter is built with a strong focus on security and privacy. By adopting this protocol, the intelligent lightbulb can provide users with peace of mind, knowing their data and smart home network are better protected against potential cyber threats.

Easy Setup and Configuration: Matter's standardized approach simplifies the setup and configuration process for the intelligent lightbulb. Users can easily add the bulb to their smart home network, reducing the complexity and technical barriers often associated with smart home devices.

Energy Efficiency: The intelligent lightbulb, supporting Matter, can take advantage of the protocol's energy-efficient features. Users can benefit from lower energy consumption and reduced electricity bills without compromising on brightness or functionality.

Future-Proof Technology: Matter is backed by prominent industry players through the Connectivity Standards Alliance (CSA), ensuring ongoing development, updates, and improvements. By choosing a Matter-enabled intelligent lightbulb, users are investing in a future-proof technology that will continue to evolve and stay relevant over time.

And With OREiN smart light bulbs, you can experience the following features:

【MUSIC SYNC LIGHTS】 OREiN Matter WiFi light bulbs will change colors with the music rhythm, allowing you to enjoy every beat. Choose Party, Dynamic, Calm, or Auto Rhythm via the Aidot app depending on your preferences. Make your LED bulbs dance with the music to create the ideal atmosphere for various occasions.

【RGBTW SMART LIGHT BULB】 OREiN Matter Smart LED bulbs provide over 16 million vivid colors and dimmable warm to cool whites (1800K-6500K). 8W equivalent to 60W brightness, saving consumption up to 85% without losing brightness or color quality with high CRI 90+. The lifespan of our smart bulbs can approximately last 25,000 hours.

【GROUP CONTROL & SCHEDULE】 Create a schedule for OREiN LED light bulbs in your daily routine. Group control multiple smart light bulbs with AiDot APP wherever you are, no need to worry about forgetting to turn off the light bulbs. You can also share devices or set a countdown to turn on lights at a specific time to prepare for the surprise.

【VOICE & REMOTE CONTROL】 Color changing smart bulbs that work with Alexa/Google Home... you could also use Siri after setting up Siri Shortcuts in AIDOT App. Control your WiFi light bulbs to turn on/off, dim, or adjust colors via simple voice commands. Really convenient to create ideal mood scenes!

【CUSTOMIZED & ROUTINE】 DIY your own scene modes with vibrant colors and animated lighting effects via AiDot APP. Or you can set My Circadian with our Alexa light bulbs, which will simulate sunlight to enhance your life by helping to boost mood, improve sleep and enhance focus.

【NOTE】 It is important to note that smart bulbs are generally not compatible with traditional dimmer switches. ONLY supports 2.4GHz. You could search for the using problem in "Feedback" of the AiDot APP.

Appearance



Set Up Your Device via Matter

This is a Matter-certified device. You can integrate it into any Matter ecosystem you prefer for easy control. As IoT manufacturers are working to optimize the user experience of Matter setup, the setup process and user experience should improve over time. Take Alexa, Google, and Apple ecosystems for example and the following shows you how to set up via Matter:

1. [Add to Alexa via Matter](#)
2. [Add to Google Home via Matter](#)
3. [Add to Apple Home via Matter](#)
4. [Add to SmartThings via Matter](#)
5. [Add to AiDot APP\(compatible with Alexa,apple home &SmartThings\)](#)

Note:

- The Matter setup code can only be used to add the device to the first ecosystem. For the second commissioning, you will need to open the app of the first ecosystem to generate a new setup code.
- A Matter hub (i.e., controller) and smart home app of the same ecosystem are required.
- Please enable **IPv6** Internet connection, you may refer to the instruction [here](#)
- Ensure your phone and Matter hub are both connected to a stable **2.4 GHz** Wi-Fi network, and that it has internet access during the setup process.
- For matter setup guides for Alexa, Google and Apple, please refer to <https://www.youtube.com/watch?v=ixllcikAzYQ>

1. Add to Alexa via Matter

Before you start:

Since Alexa's setup is temporarily limited, make sure Alexa is the first matter ecosystem when adding your matter-certified devices to Alexa. If you are unsure, please factory reset your device before setup.

1. Check Compatibility (Click [here](#) for more information)

- Alexa app version:

Android: **2.2.521848.0** or later for build version, and **2023.15** for APP version

IOS: **2.2.548660** or later for build version, and **2023.15** for APP version

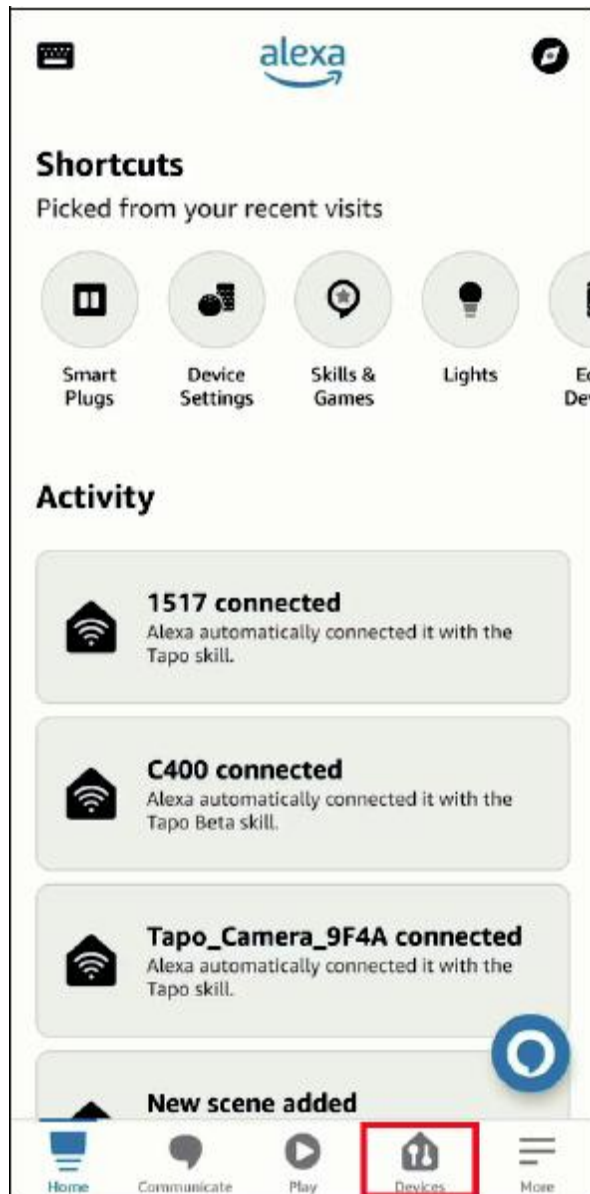
- Matter-supported Echo devices:

Device	Version
Echo/Echo Dot	5th Gen: Echo Dot, Echo Dot (Gen 5 with Clock) 4th Gen: Echo, Echo Dot, Echo Dot (Gen 4 with Clock) 3rd Gen: Echo, Echo Dot, Echo Dot (Gen 3 with Clock)
Echo Show	3rd Gen: Echo Show 10, Echo Show 15 2nd Gen: Echo Show 8, Echo Show 5 1st Gen: Echo Show, Echo Show 8

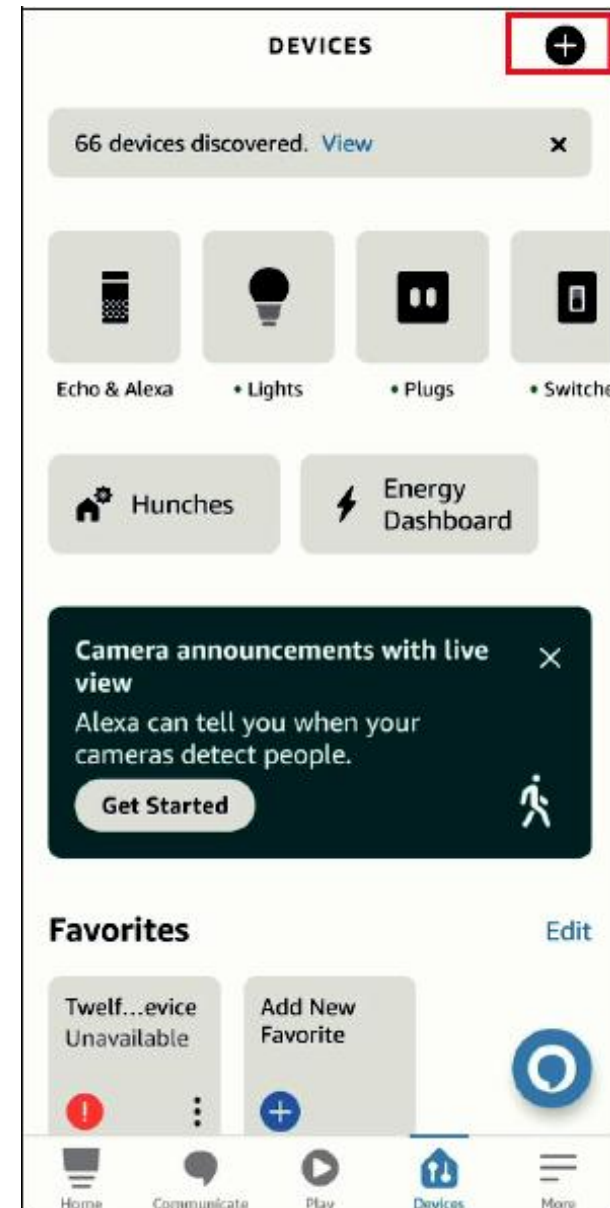
Note: Please update the software of your Echo devices to a compatible version, such as v8289070468.

2. How to Set Up Your Matter Device

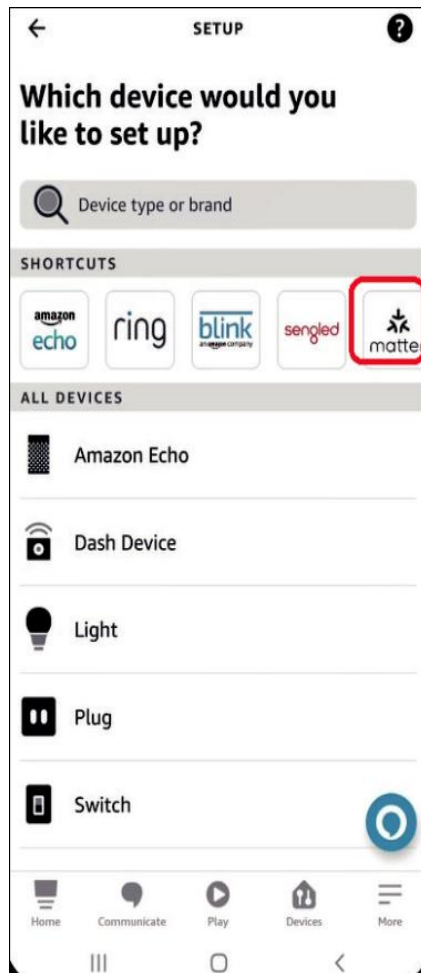
a. Launch the Alexa app and go to the Devices page.



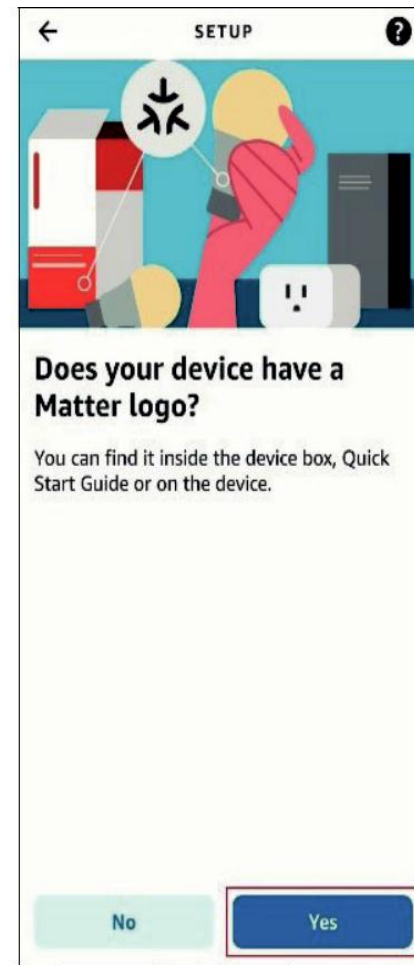
b. Tap + and then tap Add Device to add a new device.



c. Choose Matter and then tap Next on the following pages.

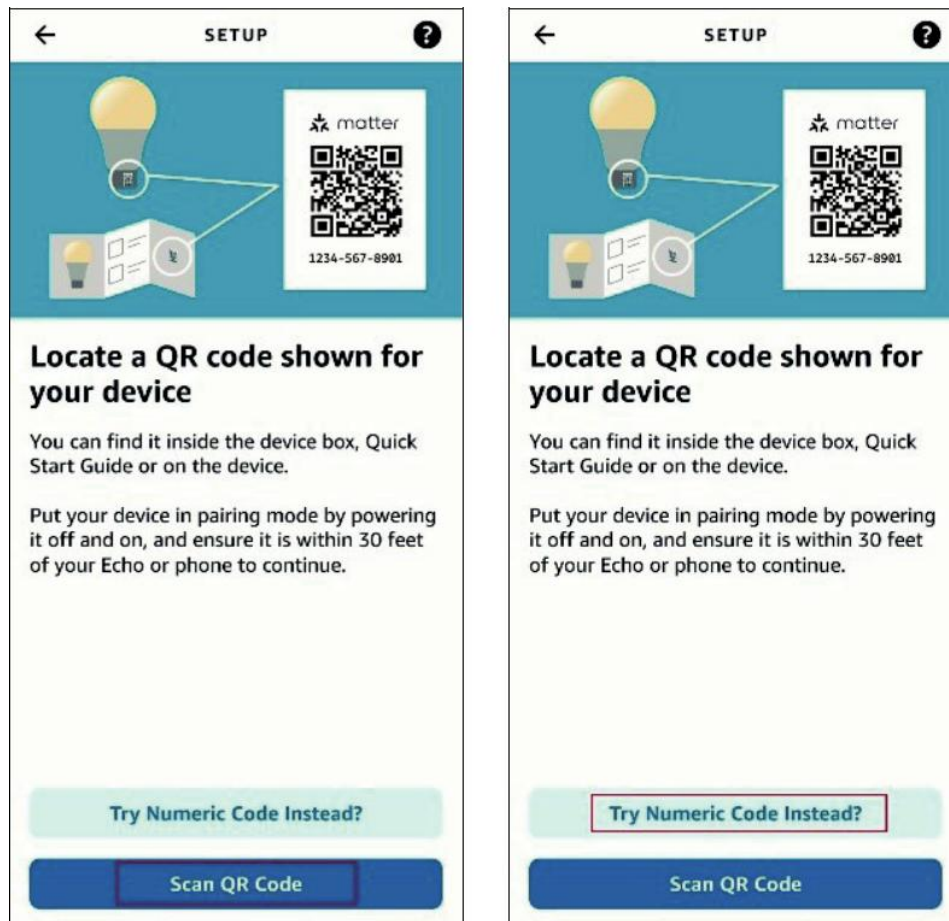


d. Tap Yes on the confirming page.



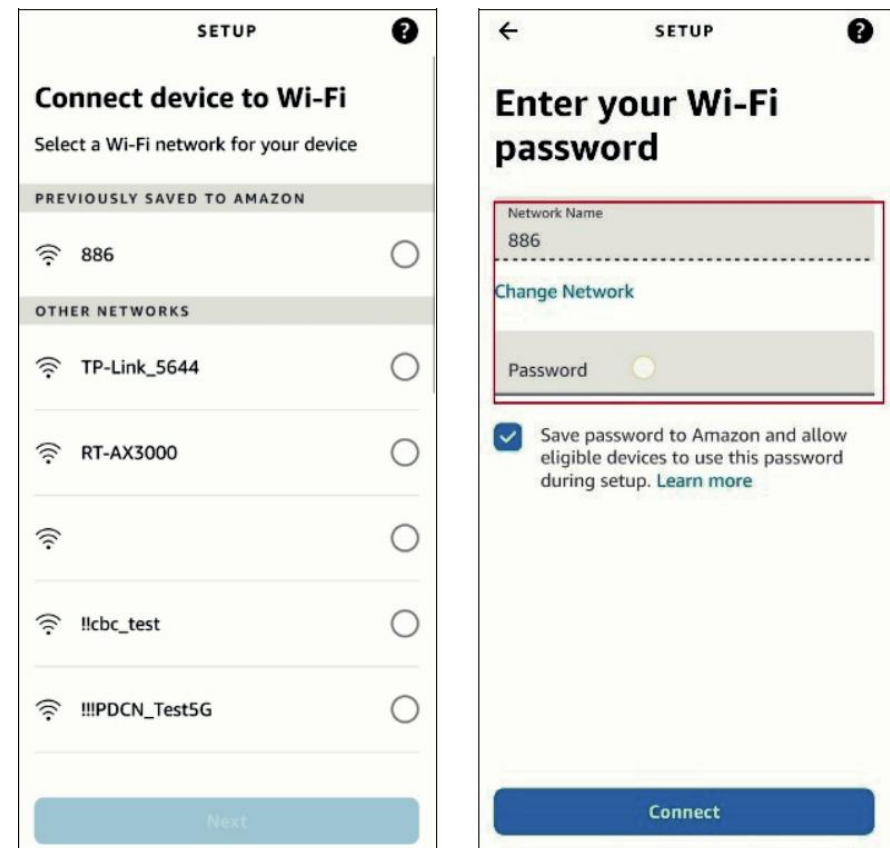
e. Tap Scan QR Code and scan the QR Code.

Alternatively, you can tap Try Numeric Code Instead? to enter the numeric setup code that comes along with your device(you may find the 11-digit code in manual as well).

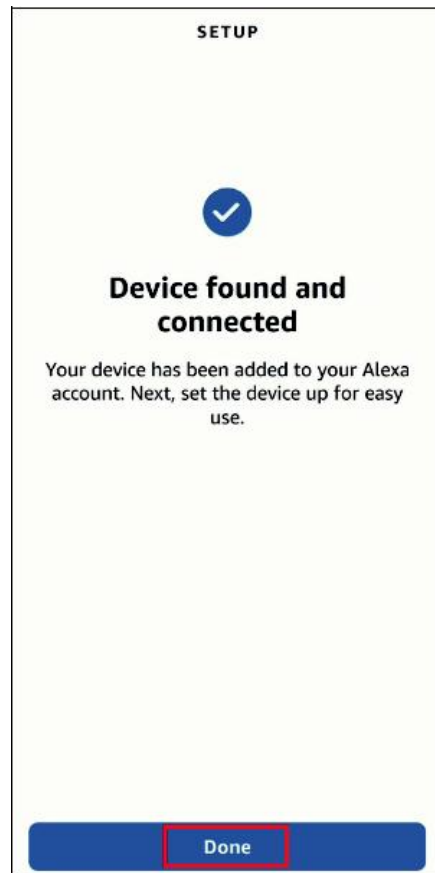


f. Wait for your device to set up, then choose the Wi-Fi you want your device to connect to and enter the corresponding Wi-Fi password.

(Note: Please ensure you are using the 2.4GHz SSID of the same router as the Echo speaker)



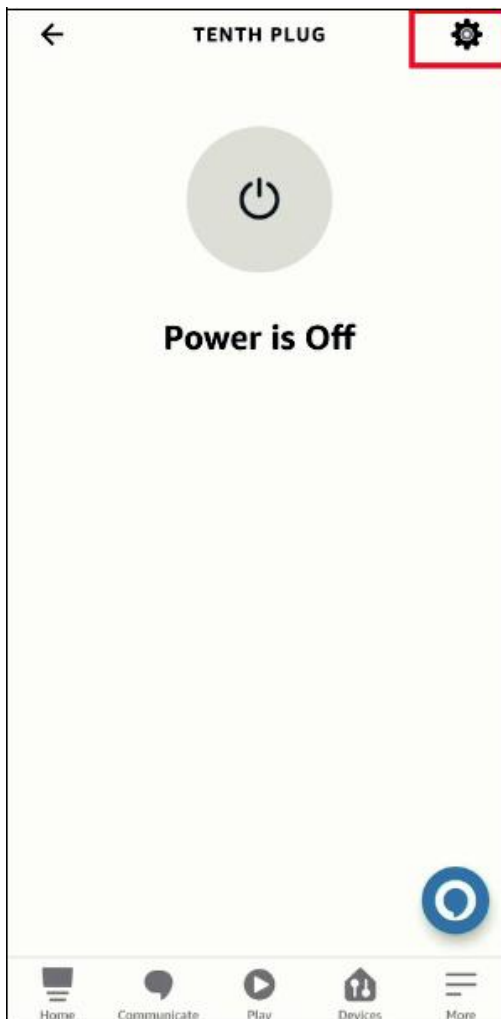
g. Tap Done. Now you can find your device on the Device list and use your voice to control your device.



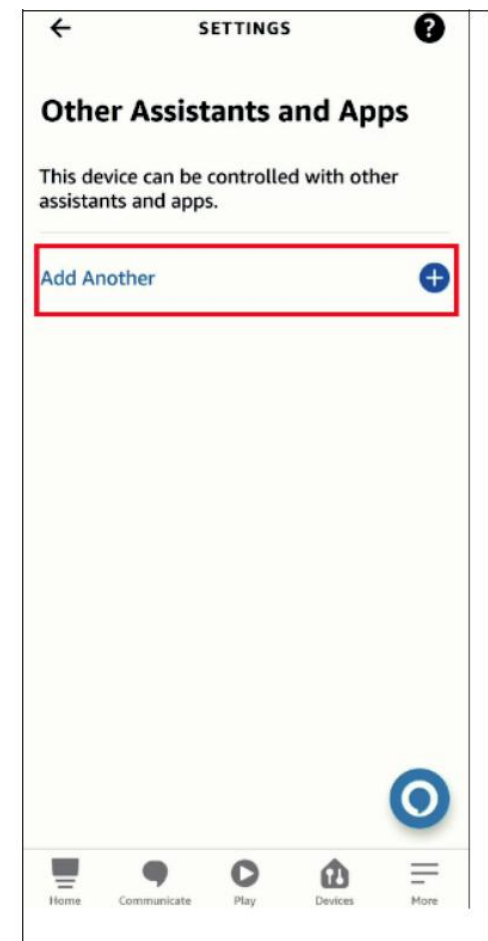
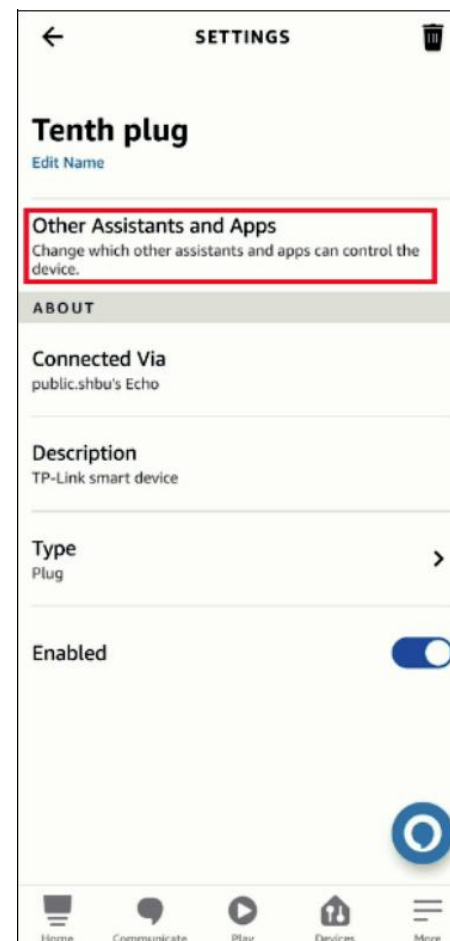
3. How to Integrate Your Device into Another Ecosystem

As the setup code can only be used to add the device to the first ecosystem, for the second commissioning, you need to open the app of the first ecosystem to generate a new setup code.

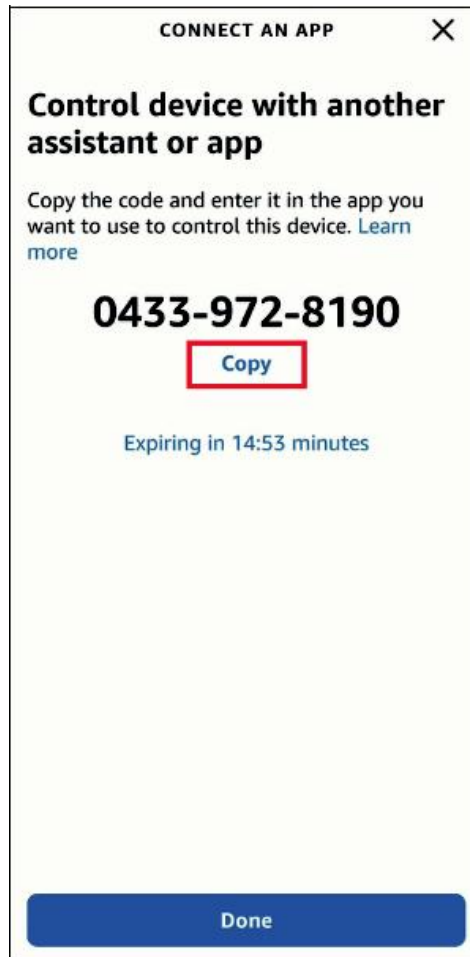
a. Launch your Alexa and go to the device Settings page.



b. Tap Other Assistants and Apps and then tap Add Another to create an 11-digit setup code.



c. Copy the setup code.



d. Launch the app of the second ecosystem. Follow the setup instruction to enter the setup code and follow the app instructions to complete the setup.



2. Add to Google Home via Matter

1. Check Compatibility (Click [here](#) for more information)

- Google Home App:

Android: 3.3.1.4 or later

IOS: 3.3.104 or later

- Matter-supported Controller:

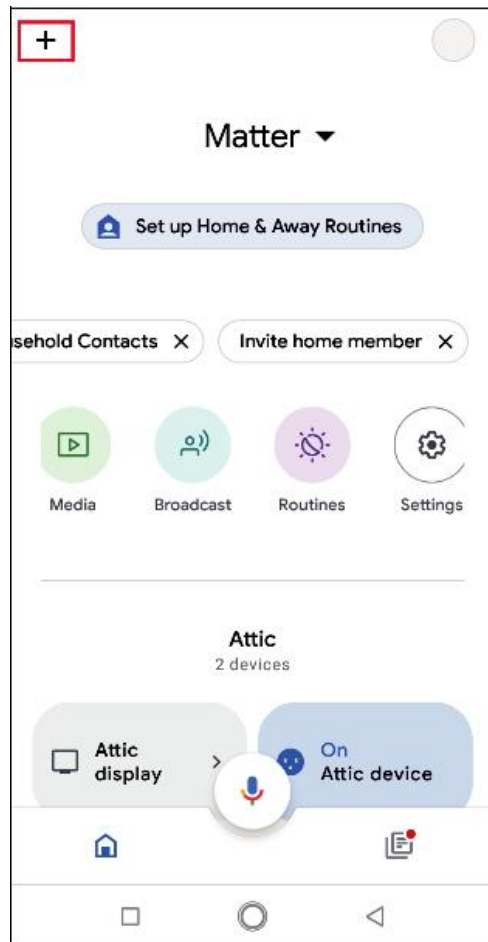
Device	Version
Wi-Fi Routers	Nest Wi-Fi Pro (Wi-Fi 6E)
Speakers	Google Home, Google Home Mini, Nest Mini, Nest Audio
Displays	Nest Hub (1st gen), Nest Hub (2nd gen), Nest Hub Max

■ Note: Please update the software/firmware of your controller devices to a compatible version, such as v1.56.324896 for Google Nest Hub (2nd gen)

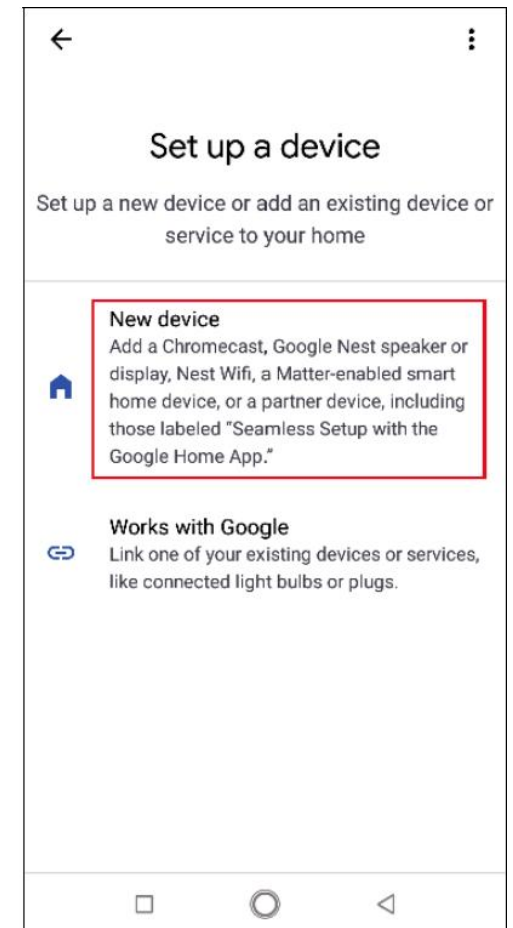
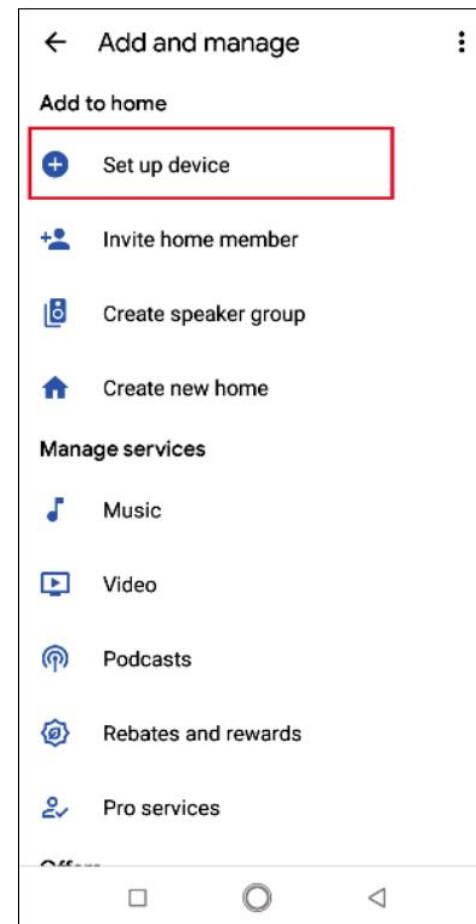
2. How to Set Up Your Matter Device

Note: The pairing mode of your Matter-certified device will automatically turn off in 15 minutes. You can turn the pairing mode back on by restarting your device, such as unplugging your plug.

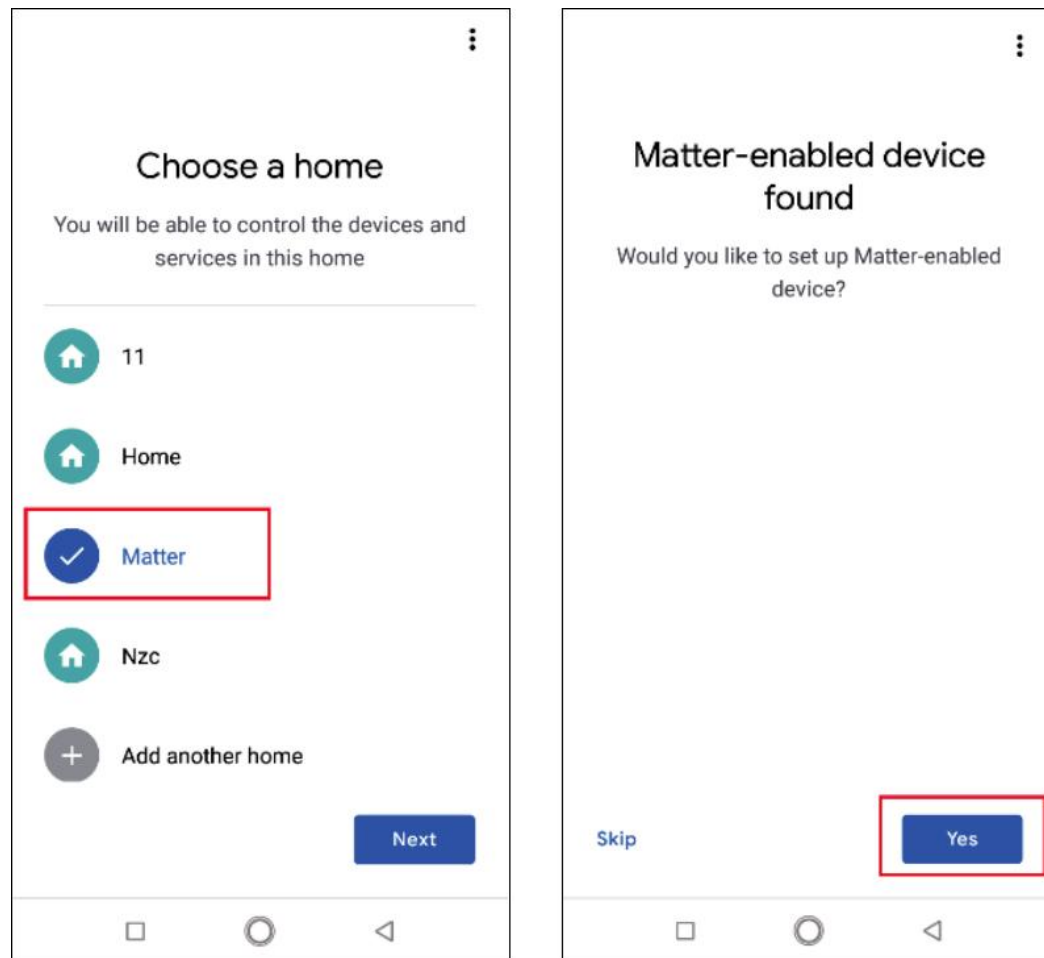
a. Launch your Google Home App and tap +.



b. Choose Set up device and tap New Device to add a new device.



c. Choose Matter and tap Yes on the conforming page.



d. Scan the setup QR code on your device. If your device comes without a QR code but a numeric code, you can tap Set up without QR code and enter the numeric code.



e. Tap Done when the device is connected.



Device connected

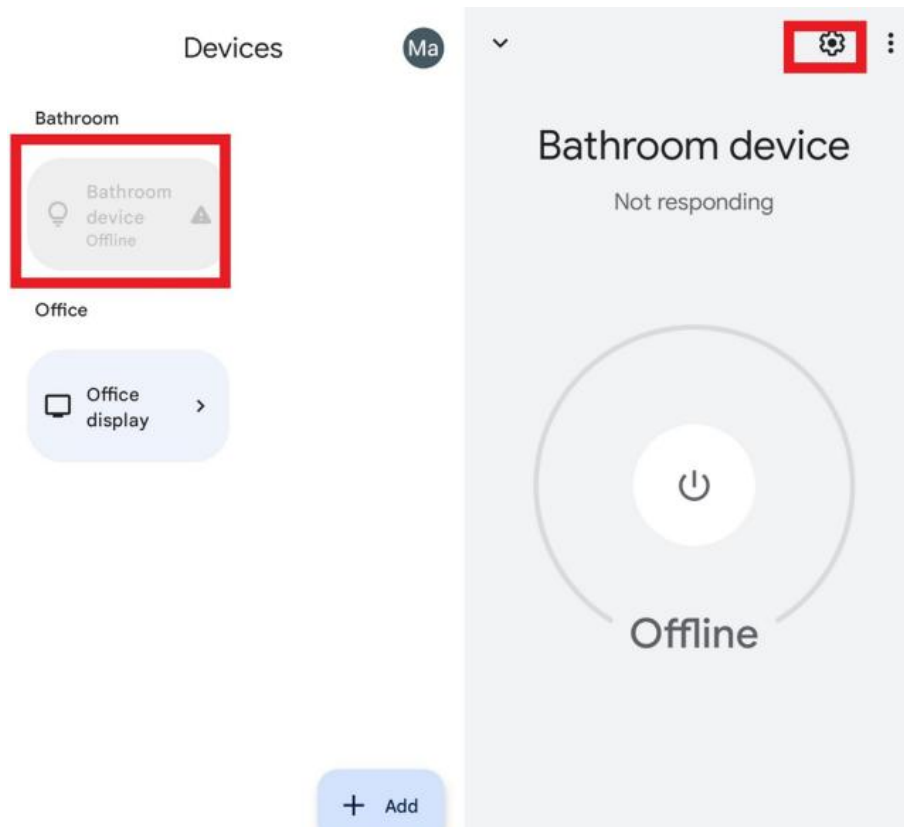


Done

3. How to Integrate Your Device into Another Ecosystem

As the setup code can only be used to add the device to the first ecosystem, for the second commissioning, you need to go to the app of the first ecosystem to generate a new setup code.

- Launch your Google Home app. Tap the gear button to go to the device settings page.
- Tap Linked Matter apps & services and then tap Link apps & services to create an 11-digit setup code.



← Bathroom device settings ⋮

General

Name

Bathroom device

Home

A7

Room

Bathroom

Linked Matter apps & services

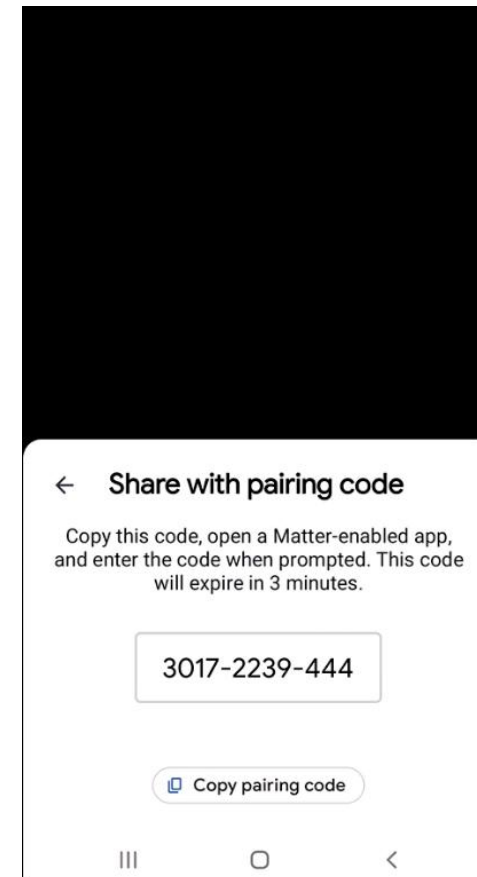
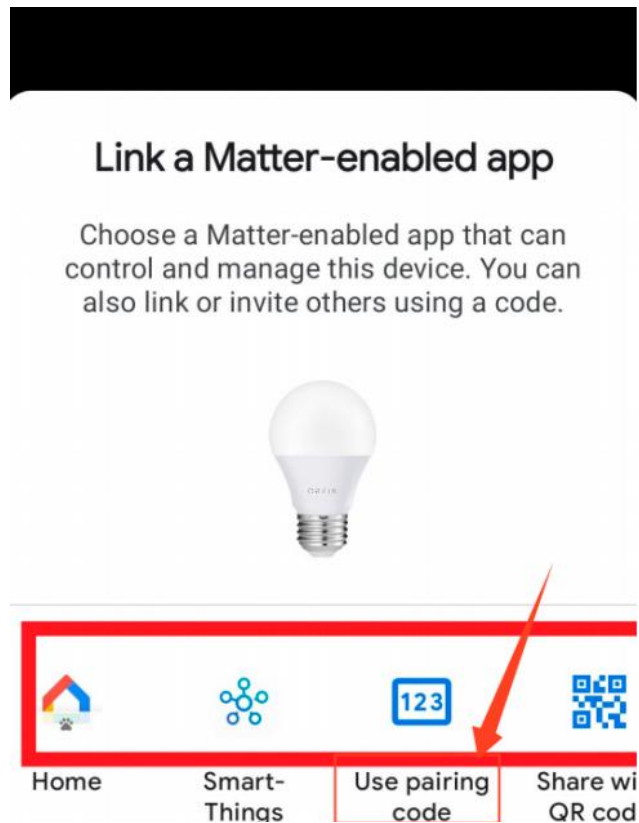
Can control and manage this device

Technical information

Wi-Fi, model, versions, more

 Remove device

c. Tap Use pairing code. d. Tap Copy pairing code to copy the new code. If conditions permit, you can alternatively tap Share with QR code and you should use the other mobile device to scan the newly-created pairing QR code.



d. Launch the app of the second ecosystem. Follow the setup instruction to enter the setup code and follow the app instructions to complete the setup.



3. Add to Apple Home via Matter

1. Check Compatibility

- iOS system: **Version 16.6 or later.**
- Matter-supported Controller: Home Pod, Home Pod mini, or Apple TV.

Note: Please update your iOS devices to iOS 16.6 or a later version. It is recommended to update your iOS to the latest version for better experience。

2. How to Set Up Your Matter Device

■ **Note:** The pairing mode of your Matter-certified device will automatically turn off in 15 minutes. You can turn the pairing mode back on by restarting your device, such as unplugging your plug.

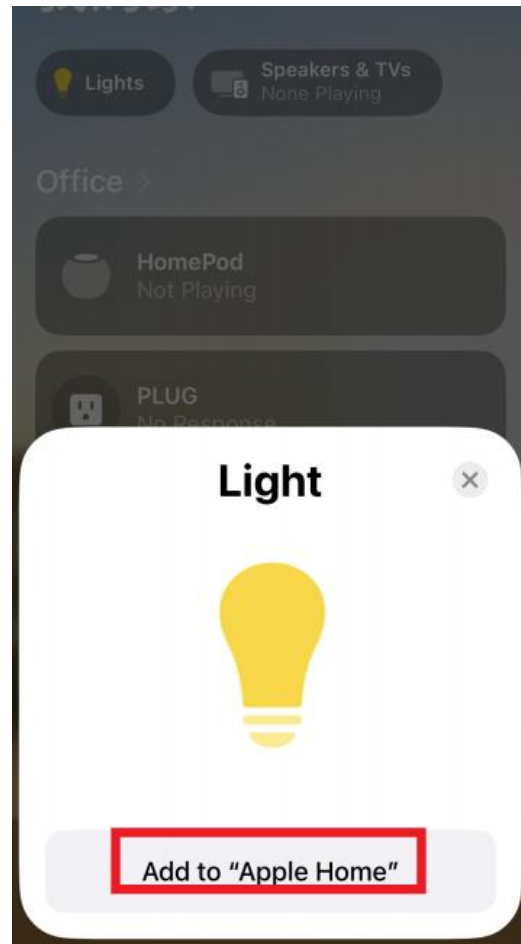
a. Launch your Home App. Tap + and then tap [Add or Scan Accessory](#) to add a new device.



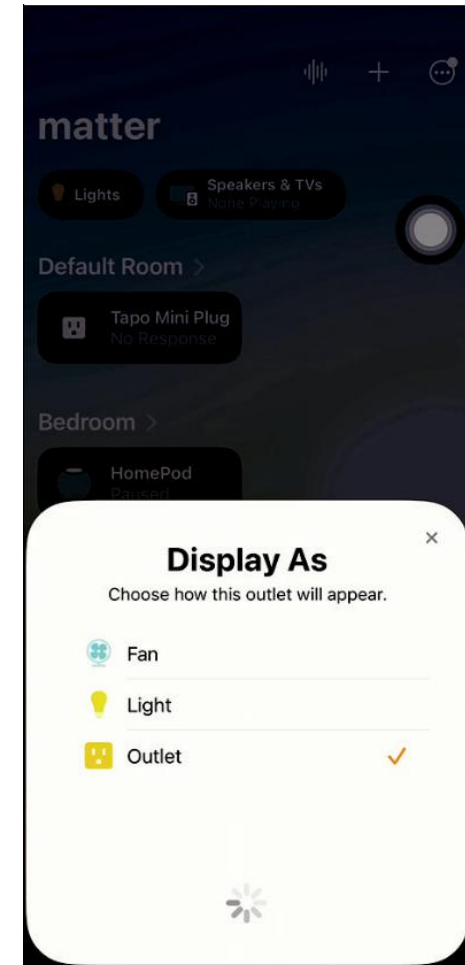
b. Scan the setup QR code on your device



c. Choose a location for your device and give it a name.



d. Choose how your device will appear. Now you can check your device on the Device list and turn on/off your device on the Home app.



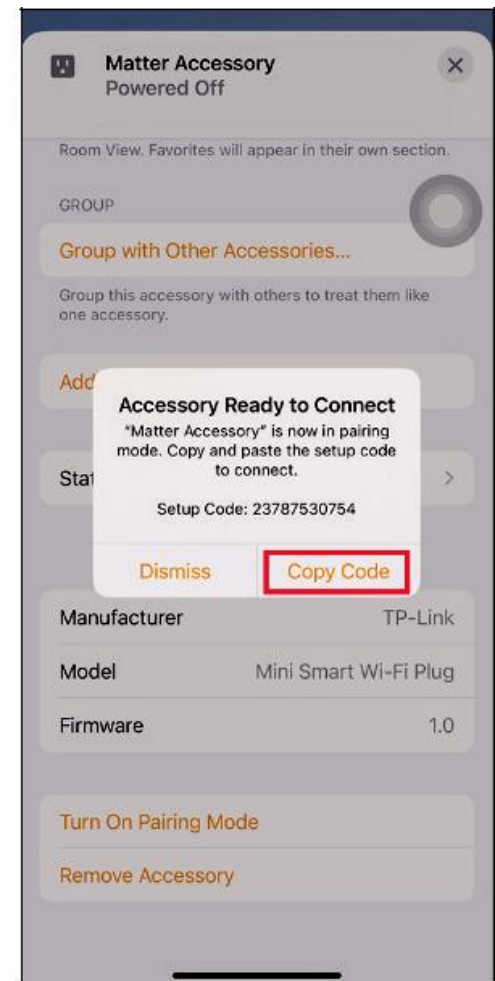
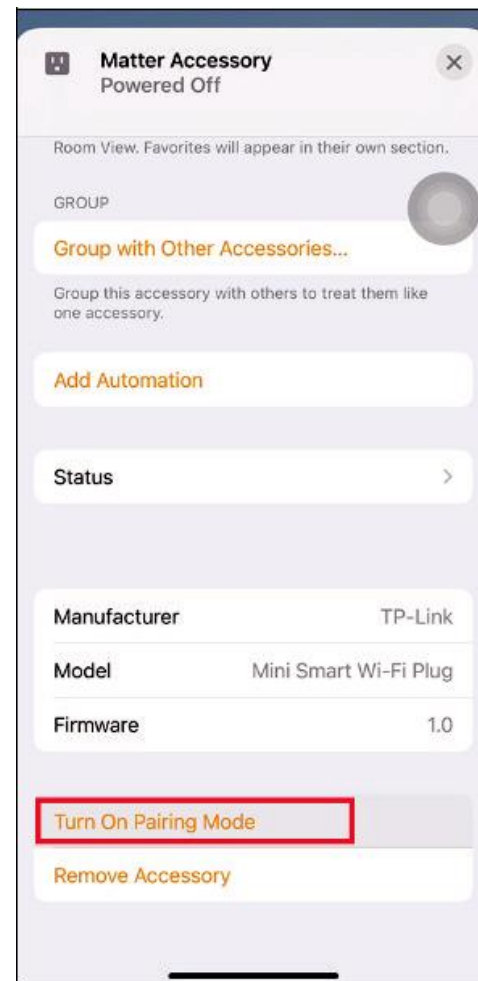
3. How to Integrate Your Device into Another Ecosystem

As the setup code can only be used to add the device to the first ecosystem, for the second commissioning, you need to go to the app of the first ecosystem to generate a new setup code.

a. Launch your Home app and go to the Device Settings page.



b. Scroll down, tap Turn On Pairing Mode and then Copy Code.



c. Launch the app of the second ecosystem. Follow the setup instruction to enter the setup code and follow the app instructions to complete the setup.



4. Add to SmartThings via Matter

1. Check Compatibility

- Android device running SmartThings App version 1.8.01.22 or higher. iOS device running SmartThings App version 1.7.02.16
- Matter-supported Controller: SmartThings Hub v3, SmartThings Hub v2

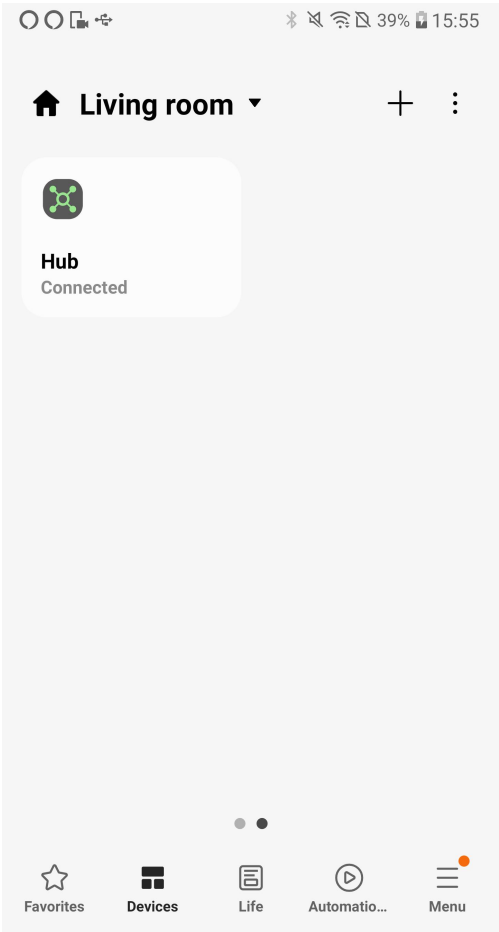
Note:

- Please update your iOS devices to iOS 16.2 or a later version. It is recommended to update your iOS to the latest version for better experience.
- Need to confirm whether it is added to "iCloud Account" first, and then added to SmartThings App.

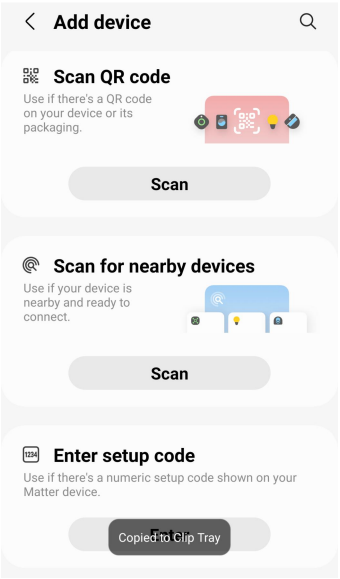
2. How to Set Up Your Matter Device

Note: The pairing mode of your Matter-certified device will automatically turn off in 15 minutes. You can turn the pairing mode back on by restarting your device, such as unplugging your plug.

a. Launch your SmartThings APP. Click the device in the bottom then Tap + and then tap **Add device** to add a new



b. Scan the setup QR code on your device, Or you may choose “Enter” to input the 11 digit code as well



<

Enter setup code

Enter the 11 or 21-digit code shown on your device or its packaging.

Your setup code looks like this

matter

1234-567-8901

2345-678-90-1

matter

1234-567-8901

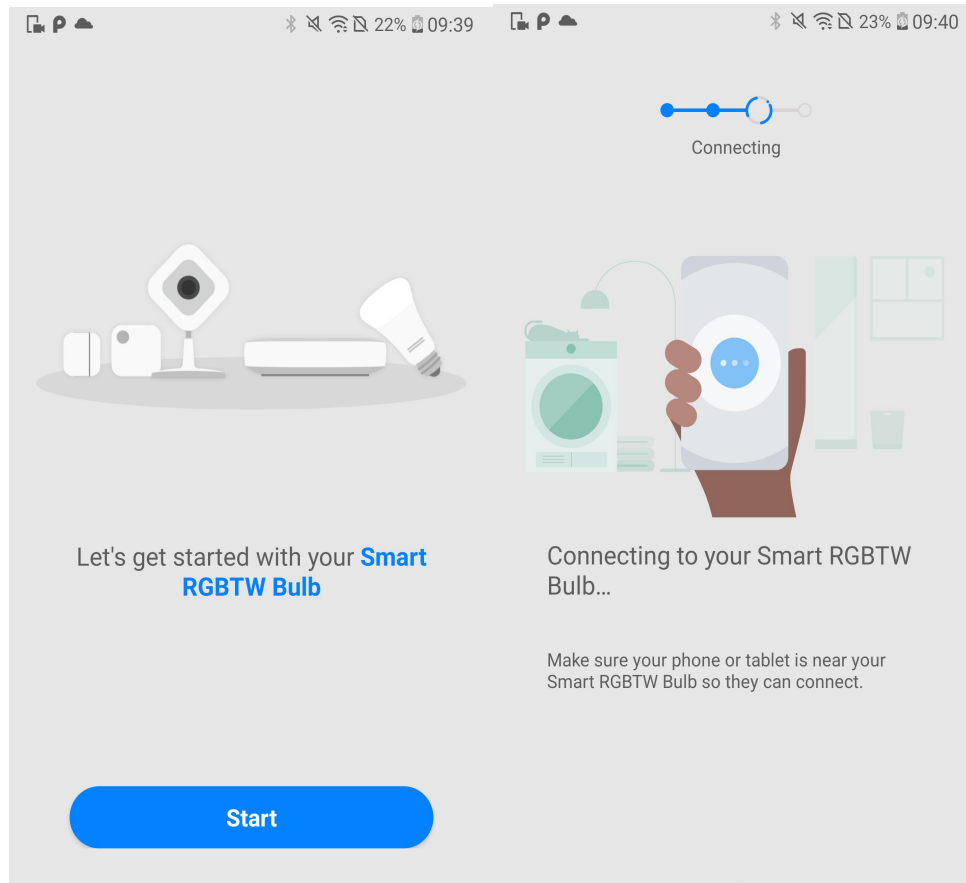
Only Matter devices can be added using a setup code.

Cancel

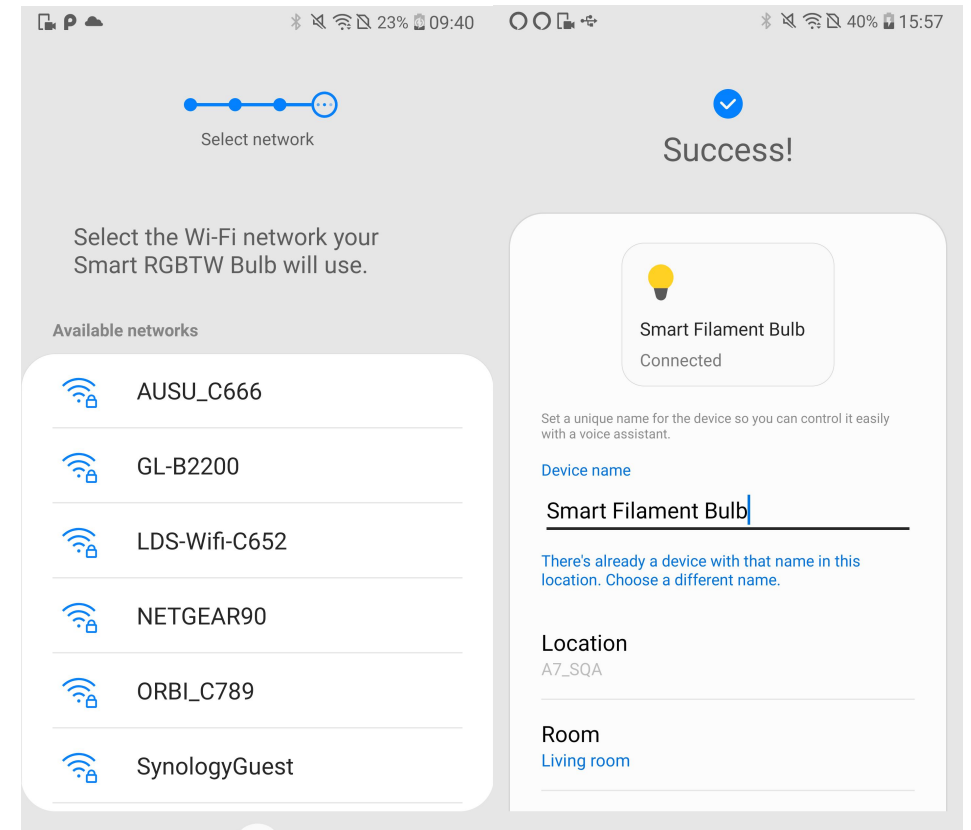
Done

1	2	3
4	5	6
7	8	9
<div><x</div>	0	Done

c. Click “start” to add a device.



d. Choose the network and input the correct Wi-Fi password, then name the device

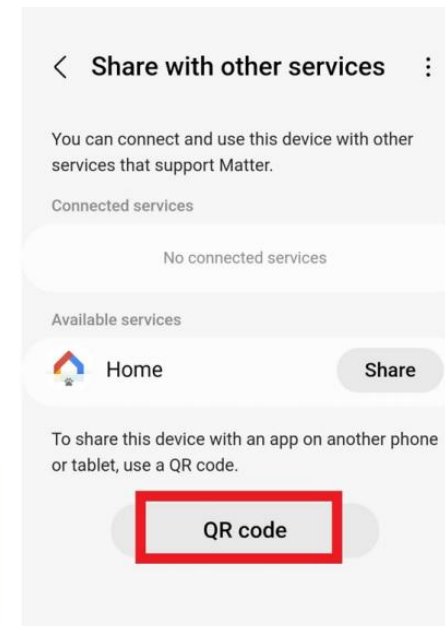
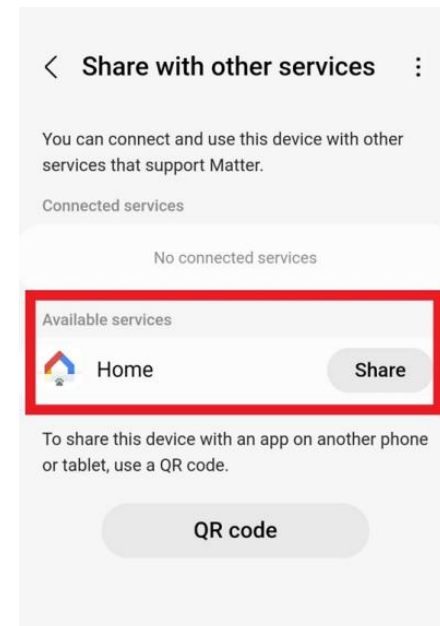
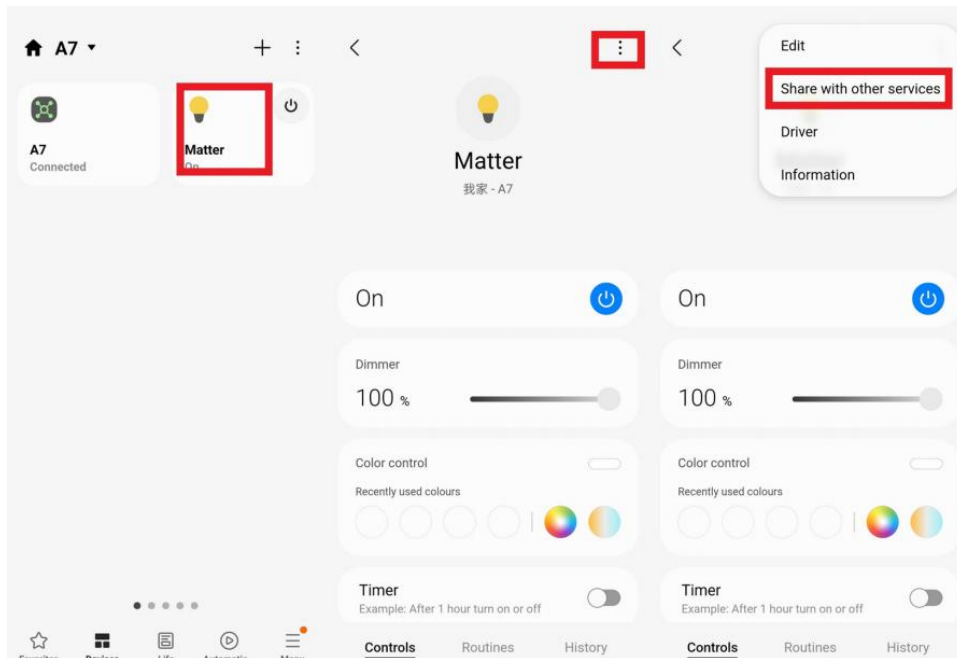


3. How to Integrate Your Device into Another Ecosystem

As the setup code can only be used to add the device to the first ecosystem, for the second commissioning, you need to go to the app of the first ecosystem to generate a new setup code.

a. Launch your SmartThings app, and click the device to enter the Device Settings page. then click:Share with other services

b. Click on the another app that needs to be shared to add automatically or get the [QR Code](#) to add manually



c. Launch the app of the second ecosystem. Follow the setup instruction to enter the setup code and follow the app instructions to complete the setup.



5. Add to AiDot APP(compatible with Alexa, apple home & SmartThings)

Follow the steps below to get started with your Matter bulbs

Step 1. Download AiDot App

Get the AiDot app from the App Store or Google Play, or by scanning the QR code below.

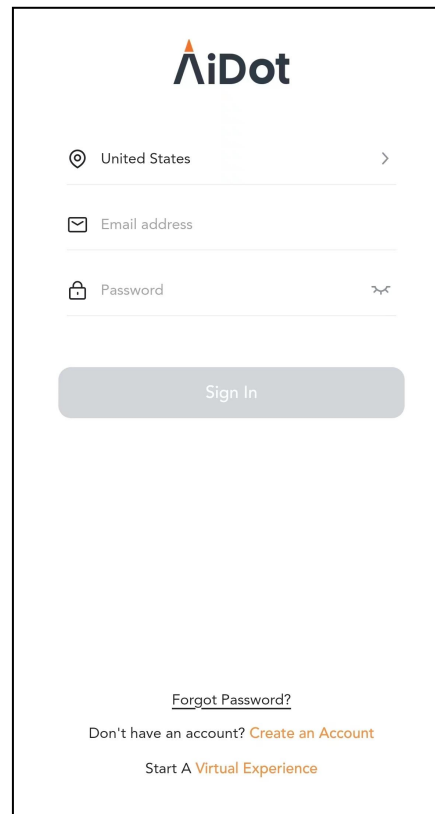


OR



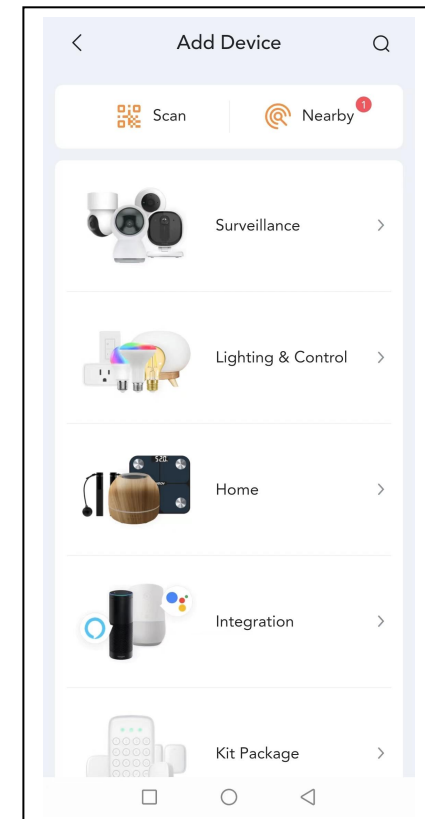
Step 2. Log In

Open the app, and log in with your AiDot account. If you don't have an account, create one first.



Step 3. Add Your Bulbs

Tap the + button in the AiDot app, choose Lighting & Control, and select your model such as Matter light Bulbs. Follow the instructions in the AiDot app to complete the setup. Then Click "Aidotor" to go into Integration Page.



Frequently Asked Question

1.

Q:Scan code prompt error / no response

A:Please confirm whether the App software version meets the minimum version requirements.

2.

Q:Can't scan the QR code on the light

A:The QR code may not be scanned when the device is turned on, you can try to scan the QR code on the instruction manual.

3.

Q:Prompt that the device cannot be found

A:

a.Network distribution for the first time (the device is in the factory state): please power on the device again, and confirm that the device is in the factory state.

Confirm that the power-on time does not exceed 15 minutes.

b.Multi-ecological distribution network (the device has been configured and shared with other hub/apps): please confirm that all devices are in the same office

In the local area network (connected to the same router), and the device pairing mode has been turned on (see the above Share to other ecology step).

4.

Q:Failed to add device

A:

a.Please confirm that the mobile phone using the App is connected to 2.4GHz WiFi and the hub (controllers) is also connected to the same router Down.

b. You can try to restart the hubs, App or mobile phone.

5.

Q:Device shows offline

A:

- a.Please try controlling the device to see if it responds normally
- b.If the device does not respond, please try to power on the device again, and wait for 2 minutes to check whether the device is back online.

6.

Q:How to reset the device

A:

- a.Continuously switch equipment 6 times, each power-on time does not exceed 2 seconds. After the reset is successful, the device will display the light effect R-G-B-W-W.
- b.After resetting the device, the device will still be displayed on the App.

7.

Q: The device name is inconsistent with what I set

A:

- a. Do not restart the device while adding the device.
- b. After adding, please wait for data synchronization or manually refresh to view.

8.

Q:Appears offline after adding a device

A:The network may be unstable, you can try to manually refresh.

9.

Q:The state of the app in the device control process jumps

A:We are currently working with Apple to resolve this issue.

10.

Q: How to get support?

A: Email: support@iorein.com Support Phone: 1-844-506-1530 (Mon-Fri PST 9:00am-5:00pm)