

[Skip to content](#)

## [Manuals+](#)

User Manuals Simplified.



# Shark RV900/AV900 Series EZ Robot Self-Empty Vacuum User Manual

[Home](#) » [Shark](#) » Shark RV900/AV900 Series EZ Robot Self-Empty Vacuum User Manual

Contents [hide](#)

[1 Shark RV900/AV900 Series EZ Robot Self-Empty Vacuum User Manual](#)

[2 SETUP](#)

[3 OPTIMIZING YOUR HOME FOR CLEANING](#)

[4 WHAT TO EXPECT](#)

[5 Questions? One Easy Step If You're Stuck:](#)

[6 Download](#)

[7 Related Posts](#)

## Shark RV900/AV900 Series EZ Robot Self-Empty Vacuum User Manual

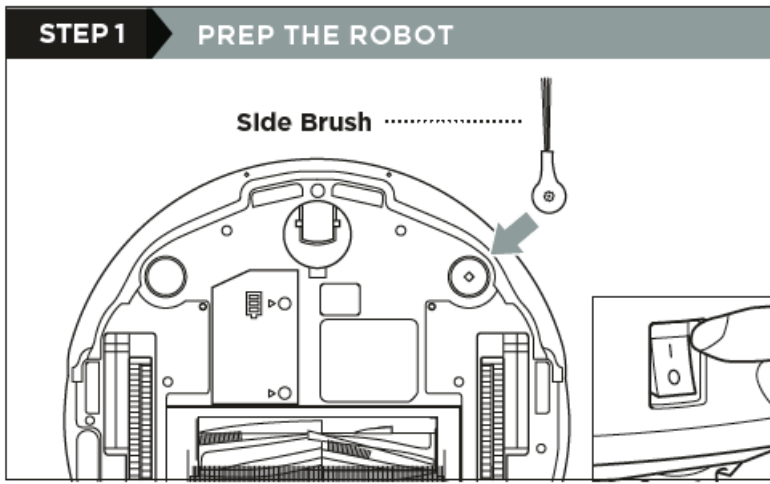


### QUICK START GUIDE

This article contains the **Quick Start Guide** for the RV900S Series Shark® EZ Robot Vacuum. This supports the RV900S, AV900S, RV910S, RV911S, RV912S, RV910S, AV9112S1US, AV9113S1US, AV911S, RV9105WWUS, RV9123S1US, RV912S1US, RV912SCA, RV9133S1US, RV913S, RV9124S3CA and RV915S SKUs.

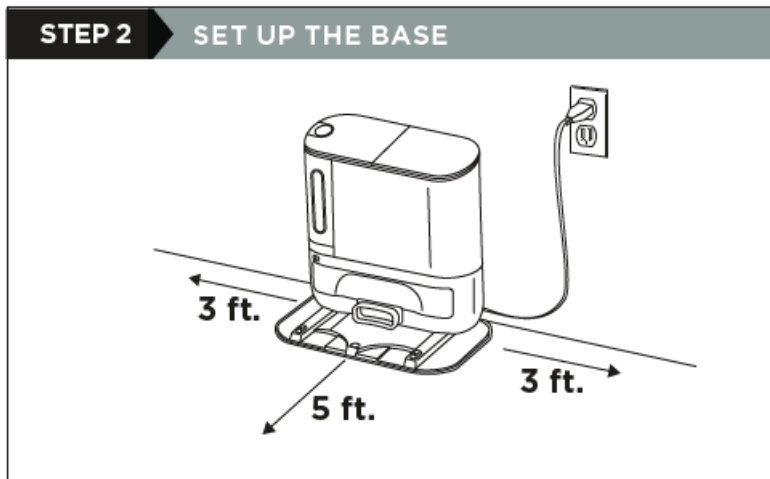
### SETUP

#### STEP 1: PREP THE ROBOT



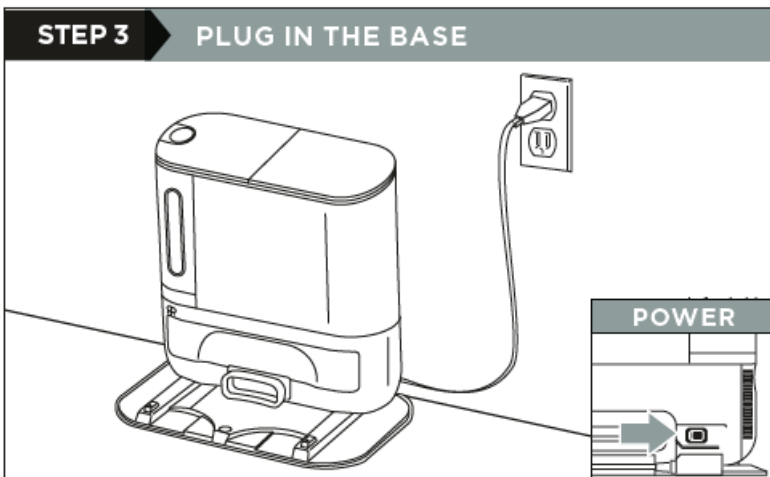
- Remove protective film from robot and base.
- Snap the single side brush onto the post on the bottom of the robot.
- Turn on the power by pressing the button on the side of the robot to the (I) ON position.

**STEP 2: SET UP THE BASE**




Find a permanent location for the base. Place it with its back against a wall, in an area with a strong Wi-Fi signal. Remove any objects that are closer than 3 ft. from either side of the base, or closer than 5 ft. from the front. For best results, set up base on bare floor.

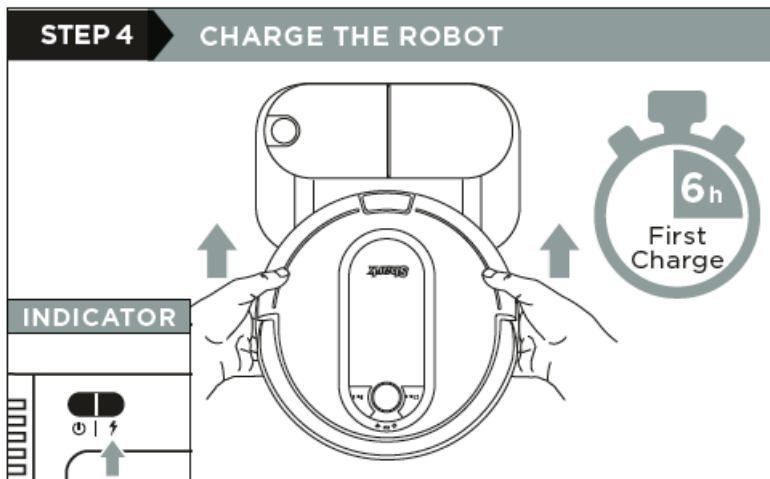
**STEP 3: PLUG IN THE BASE**



- Plug the base power cord into an electrical outlet.
- Turn the power switch on the back of the base to the (I) ON position.

- The green **power indicator light**  on the base will illuminate when the base has power.

#### STEP 4: CHARGE THE ROBOT



- To charge, place robot with its **BACK** side against base.
  - Turn power switches on **BOTH** robot and base to (I) **ON** position.
  - When charging begins, robot will beep and **BLUE** charging indicator light on base will **PULSE**.
  - When robot is fully charged, light will turn **SOLID blue**.
- NOTE: Every time the robot returns to the base, it will make a loud noise as it empties debris. This is normal and no cause for concern.

#### OPTIMIZING YOUR HOME FOR CLEANING

##### STEP 5: PREP YOUR HOME



Clear cords and remove small objects like toys, clothing, or drapes from floors. Open interior doors in rooms you want your robot to clean. For best results, run your robot in well-lit conditions.

##### STEP 6: DOWNLOAD THE SHARKCLEAN® APP

**STEP 6****DOWNLOAD THE SHARKCLEAN® APP**

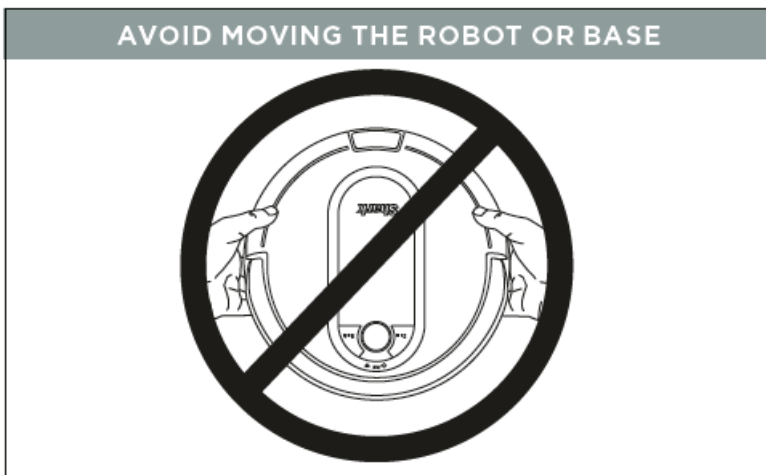
Scan QR code with your phone's camera to quickly find and download the app

Search "SharkClean" in the app store. Some of the exclusive features in the app:

- Cleaning Reports
- Scheduled Cleaning
- Extended Clean
- Cleaning Modes

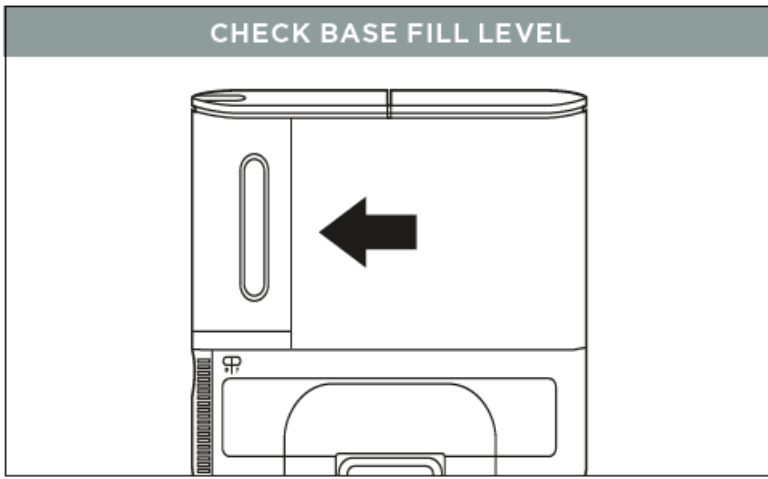
**WHAT TO EXPECT**

As your robot learns your home, you may need to make some small adjustments to optimize performance.

**AVOID MOVING THE ROBOT OR BASE**

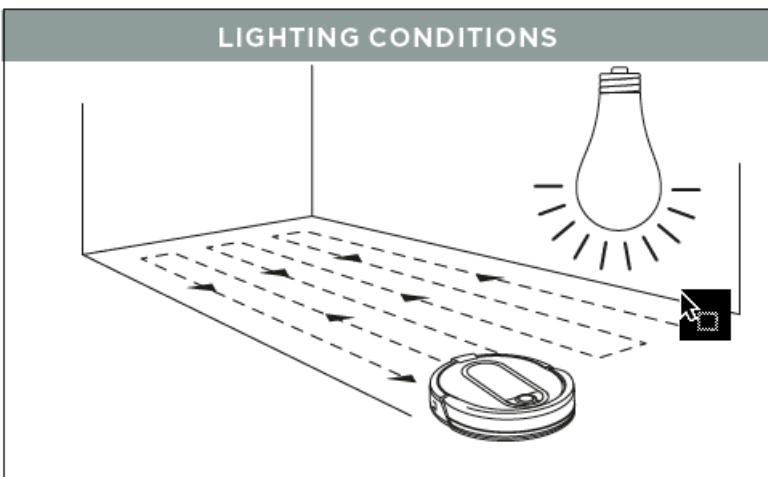
While your robot is cleaning, **DO NOT** pick it up and move it, or move the charging base—this will impact the robot's ability to clean your home.

**CHECK BASE FILL LEVEL**



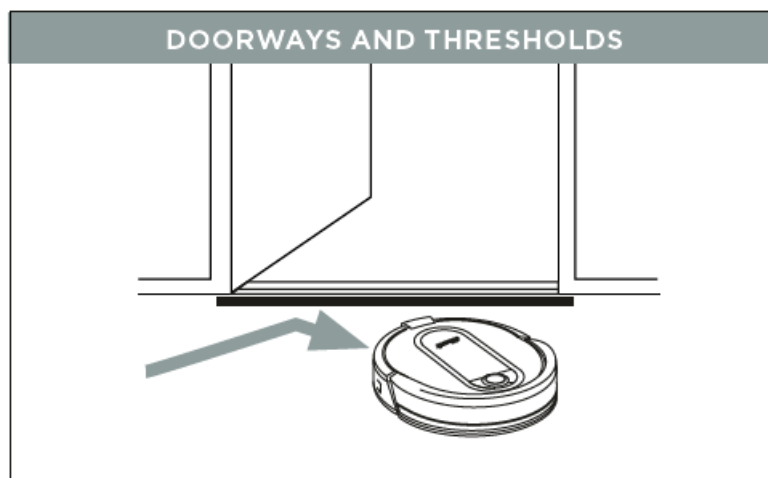
During the first few weeks, your robot will empty more debris than usual. Check the fill level regularly. The dust bin is designed to hold up to 30 days' worth of debris, but home environments vary, and the bin may fill up quicker in some homes.

### LIGHTING CONDITIONS



For best results, run your robot in well-lit conditions. If you run your robot at night, keep the lights on in the areas to be cleaned.

### DOORWAYS AND THRESHOLDS



Your robot can easily climb over most thresholds, but if one is higher than an inch, block it off with a BotBoundary® strip. BotBoundary strips are not included in the box. To purchase, please visit [sharkaccessories.com](http://sharkaccessories.com).

### CAN'T CONNECT TO WI-FI?

## Restart your phone

- Turn off phone, wait a few minutes, then turn it back on and connect to Wi-Fi.

## Reboot your robot

- Make sure the power switch on the back of the BASE is in the ON position.
- Press the power button on the side of the ROBOT to the OFF position. Wait 10 seconds, then press it again to turn power back ON.

## Reboot your router

- Unplug the router power cable for 30 seconds, then plug it back in. Allow several minutes for your router to reboot completely.

## Questions? One Easy Step If You're Stuck:

### Having trouble connecting to your robot?

For how-to videos, FAQs, troubleshooting, and tips & tricks visit: [sharkclean.com/support](https://sharkclean.com/support)

### Smart Home Setup

To set up voice control using Google Home or Amazon Alexa, visit [sharkclean.com/app](https://sharkclean.com/app) for instructions.

© 2022 SharkNinja Operating LLC. BOTBOUNDARY, CONSTANT STATE OF CLEAN, SHARK, SHARKCLEAN, SHARK IQ ROBOT SELFEMPTY, and SHARK IQ ROBOT are registered trademarks of SharkNinja Operating LLC. APPLE, the Apple logo, and iPhone are trademarks of Apple Inc., registered in the U.S. and other countries. APP STORE is a service mark of Apple Inc., registered in the U.S. and other countries.

GOOGLE, GOOGLE ASSISTANT, GOOGLE PLAY, the Google Play logo, and Android are trademarks of GOOGLE LLC.

RV900S\_QSG\_NBRSH\_E\_MP\_Mv1

---

## Download

- **RV900S Series Shark® EZ Robot Self-Empty Vacuum:**  
Quick Start Guide – [\[Download PDF\]](#)  
Owner's Guide – [\[Download PDF\]](#)
  - **RV900AE Series Shark® EZ Robot Self-Empty Vacuum:**  
Owner's Guide – [\[Download PDF\]](#)
  - **RV900 Series Shark® EZ Robot Self-Empty Vacuum:**  
Owner's Guide – [\[Download PDF\]](#)
- 

## [Manuals+](#),

- [home](#)
- [privacy](#)