

[Skip to content](#)

[Manuals+](#)

User Manuals Simplified.

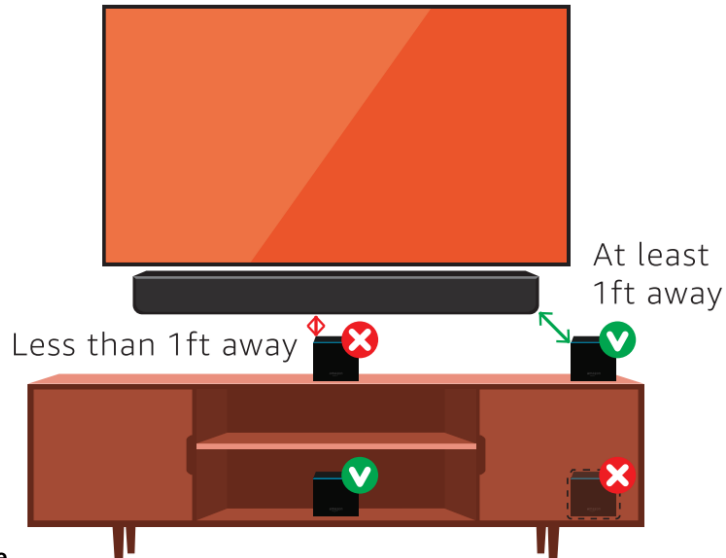


amazon Fire TV Cube 4K Streaming Media Player User Guide

[Home](#) » [Amazon](#) » amazon Fire TV Cube 4K Streaming Media Player User Guide



POSITION YOUR FIRE TV CUBE



PLACE FIRE TV CUBE 1FT AWAY FROM ANY SPEAKERS, with the ports facing away from you.
IT SHOULD NOT BE PLACED IN A CLOSED CABINET.

Fire TV Cube needs to hear your commands.

To control components that are in a closed cabinet, use an IR extender (sold separately).

Contents [hide](#)

[1 MEET YOUR FIRE TV CUBE](#)

[2 CONNECT YOUR FIRE TV CUBE](#)

[3 FIRE TV ALEXA VOICE REMOTE](#)

[4 DO EVEN MORE WITH ALEXA](#)

[5 ENHANCE YOUR EXPERIENCE](#)

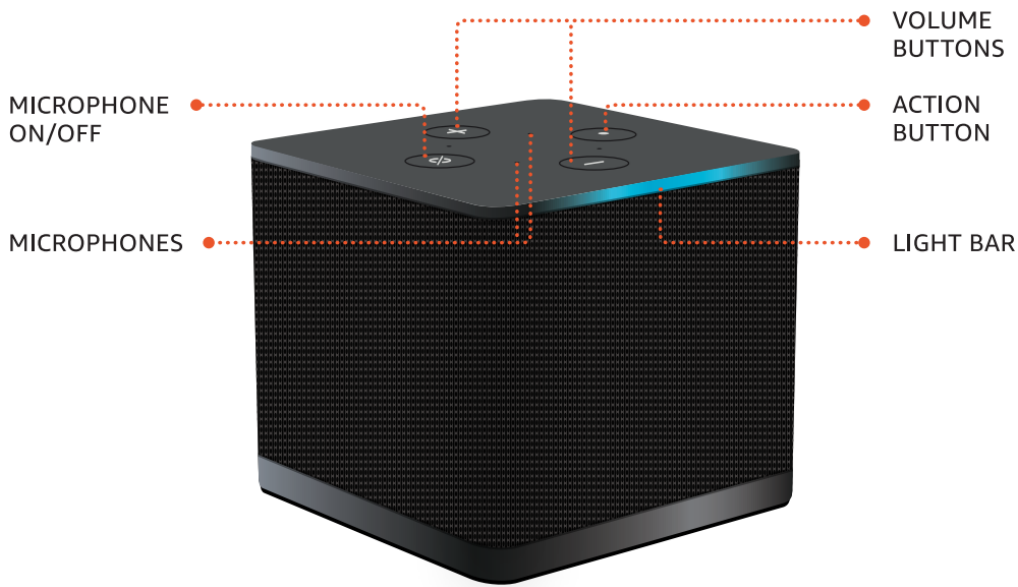
[6 PRIVACY CONTROL](#)

[7 Documents / Resources](#)

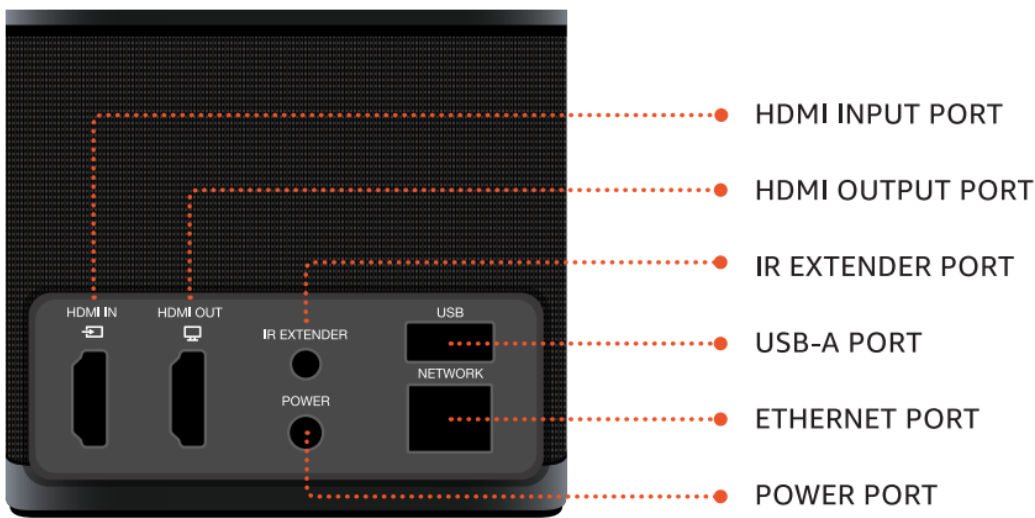
[8 Related Posts](#)

MEET YOUR FIRE TV CUBE

FRONT



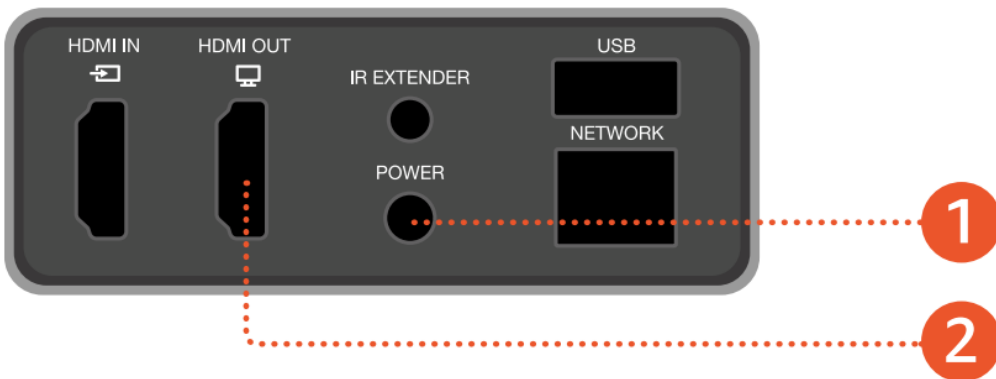
BACK



***Important:** High-speed HDMI cable is not included in the box.

Also included: remote, power adapter, AAA batteries

CONNECT YOUR FIRE TV CUBE



1. PLUG IN THE POWER CABLE



Connect the included power adapter to Fire TV Cube and plug it into a power outlet.

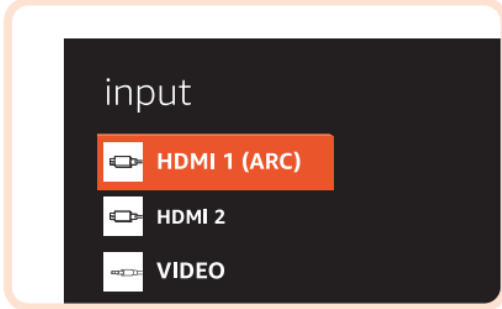
2. CONNECT THE HDMI CABLE

Use a high-speed HDMI cable (not included) to connect the HDMI OUT port on the Fire TV Cube to the HDMI port on your TV.



3. SELECT INPUT FOR TV

Turn on your TV, then select the input on your TV that matches the name of the HDMI port you connected to.



Tip: Using the included remote control, go to the Settings menu in Fire TV Cube, and select your network from the list displayed. If your network is hidden, enter your network name.

Tip: If you see a lock icon, your wifi network requires a password, so make sure you have it available before set up. This password is not your Amazon account password.

For more troubleshooting and information, go to www.amazon.com/devicesupport.

LEARN ABOUT THE BUTTONS



ACTION

Multi-function button used to wake Alexa.



MICROPHONE ON/OFF

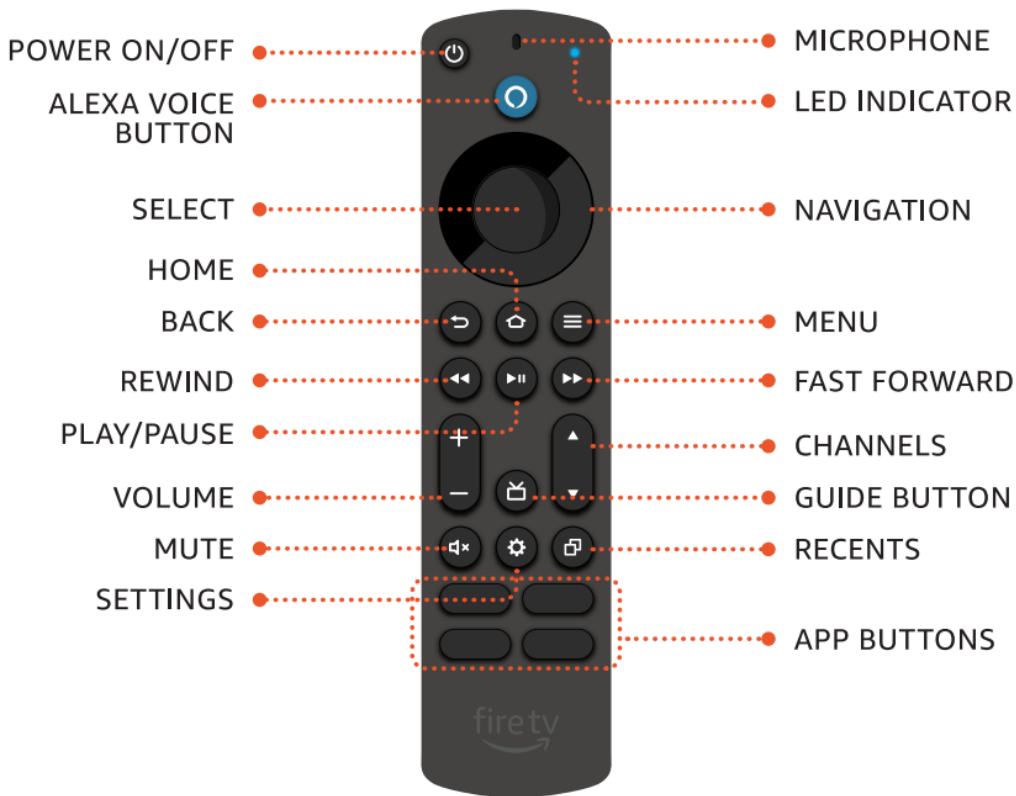
Press the microphone on/off button to mute.



VOLUME

Control the internal speaker of the Fire TV Cube.

FIRE TV ALEXA VOICE REMOTE

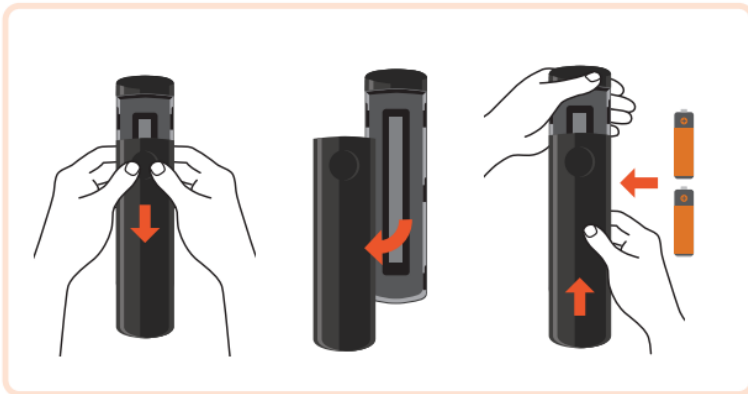


POWER UP YOUR REMOTE

1. INSERT BATTERIES


Use your thumbs to slide open the back of the remote, then insert included batteries.

Tip: If the remote battery compartment will not open, clean the backing with a moist cloth and dry thoroughly.



2. USE YOUR REMOTE

The remote can now control Fire TV Cube. To control other devices, follow the on-screen steps.

Tip: If the remote isn't discovered, press and hold the Home  button until the LED flashes amber.

WATCH WITH ALEXA

Alexa makes it easy to find, launch, and control content. Simply say "Alexa" to Fire TV Cube or press the voice button on your remote.



DO EVEN MORE WITH ALEXA

Alexa can help you unwind, control your smart home devices, and keep you better informed, organized, and connected.



CONTROL YOUR SMART HOME

"Alexa, show my front door camera." "Alexa, turn on the lights."



LISTEN & UNWIND

"Alexa, play music on Spotify." "Alexa, resume my audiobook."



DISCOVER MORE

"Alexa, call Dad." "Alexa, show me the weather."



ENHANCE YOUR EXPERIENCE

ETHERNET CABLE

If you prefer a wired Ethernet connection instead of wifi, please connect the Ethernet cable (not included) to the network port.

IR EXTENDER

If you are using an IR extender (sold separately) to control devices in a closed cabinet, place the IR extender on the same shelf as the devices you want to control.

CABLE/SATELLITE BOXES

You can connect your Cable/Satellite set-top box, Gaming console, or DVD/Blu-Ray player to the HDMI input port to easily switch input using Alexa and view content from these devices.

ALEXA HOME THEATER

For an immersive audio experience, wirelessly pair your Fire TV Cube with compatible Echo devices. To learn more, go to www.amazon.com/alexa-home-theater

VIDEO CALLING

Connect a compatible USB webcam to make two-way video calls. To learn more, go to <https://www.amazon.com/help/firetv/twowaycalling/qsg>

PRIVACY CONTROL



PRIVACY CONTROL

- Turn the mics off by pressing the microphone on/off button.
- See when Alexa is recording and sending your request to Amazon's secure cloud via the blue indicator light.



MANAGE YOUR VOICE HISTORY

You can view, hear, and delete the recordings associated with your account in the Alexa app at any time.

To delete your voice recordings, say

“Alexa, delete what I just said.”

“Alexa, delete everything I've ever said.”

ACCESSIBILITY



If you need accessibility help, go to:

www.amazon.com/help/firetv/accessibility

Documents / Resources



[amazon Fire TV Cube 4K Streaming Media Player](#) [pdf] User Guide

Fire TV Cube 4K Streaming Media Player, 4K Streaming Media Player, Fire TV Cube Media Player, Media Player, Player

[Manuals+](#)

- [home](#)
- [privacy](#)